

WTP2 Software Upgrade

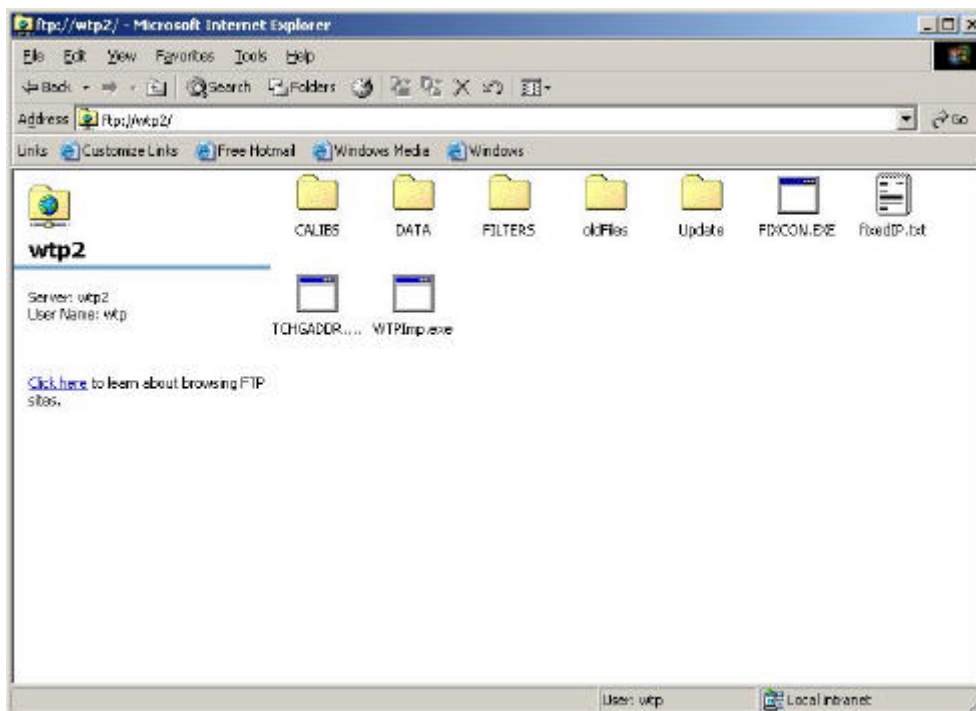
This document details the general upgrade procedure for the WTP2 application file (WTPimp.exe), it also contains specific details for update to dependent files `setting6.d` and `sample08.d` - this change is not relevant to all upgrades. If unsure please contact B&G Technical Support.

To upgrade the WTP2 to the latest software version, follow these steps:

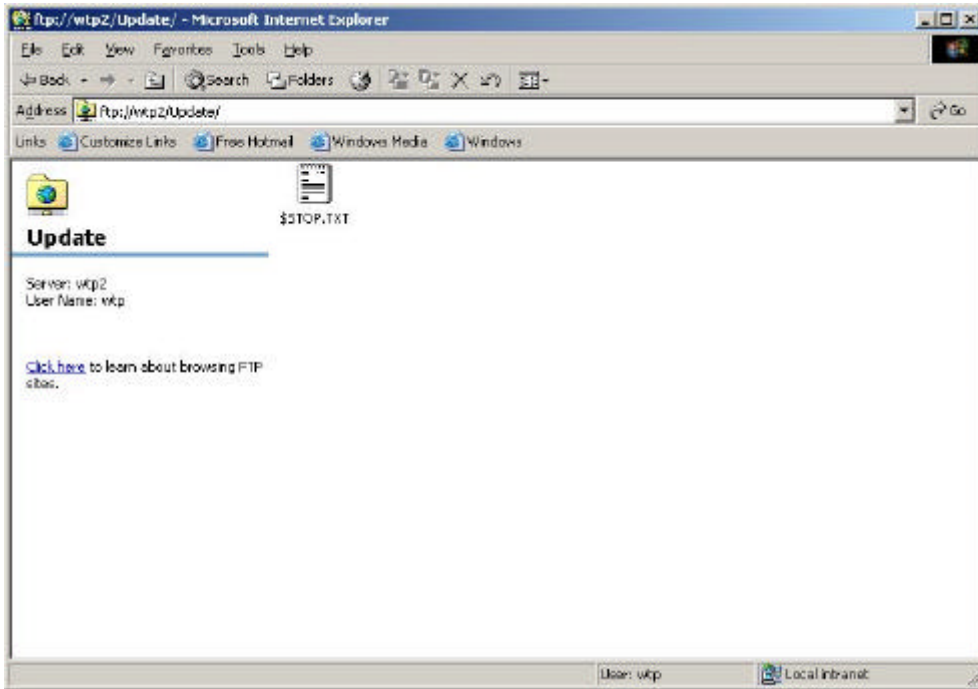
CAUTION

It is recommended to backup all your current files regularly and always before carrying out any system updates.

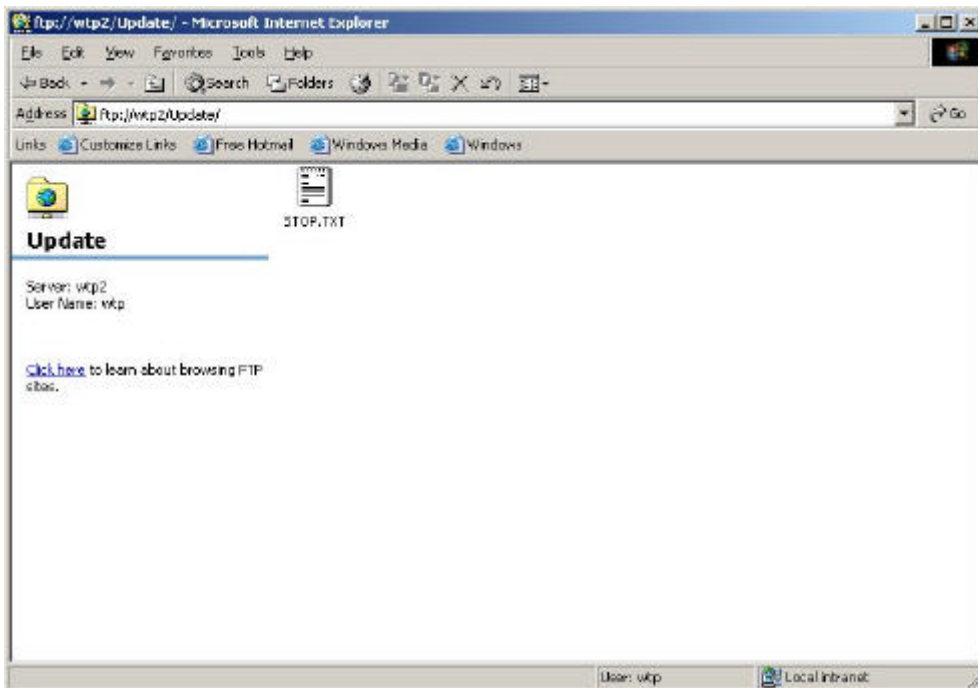
- 1) Start WTP2 and connect via FTP. Consult the manual for more detail. If you are unsure of this procedure please consult a specialist.
- 2) In the FTP root directory (as shown below), you will see a Folder called UPDATE



- 3) Open the UPDATE folder and you will find a file called \$STOP . TXT (as shown below)



- 4) Rename this file to be STOP . TXT, (i.e. remove the "\$") as shown below:



- 5) Once this file has been renamed, re-start the WTP2.

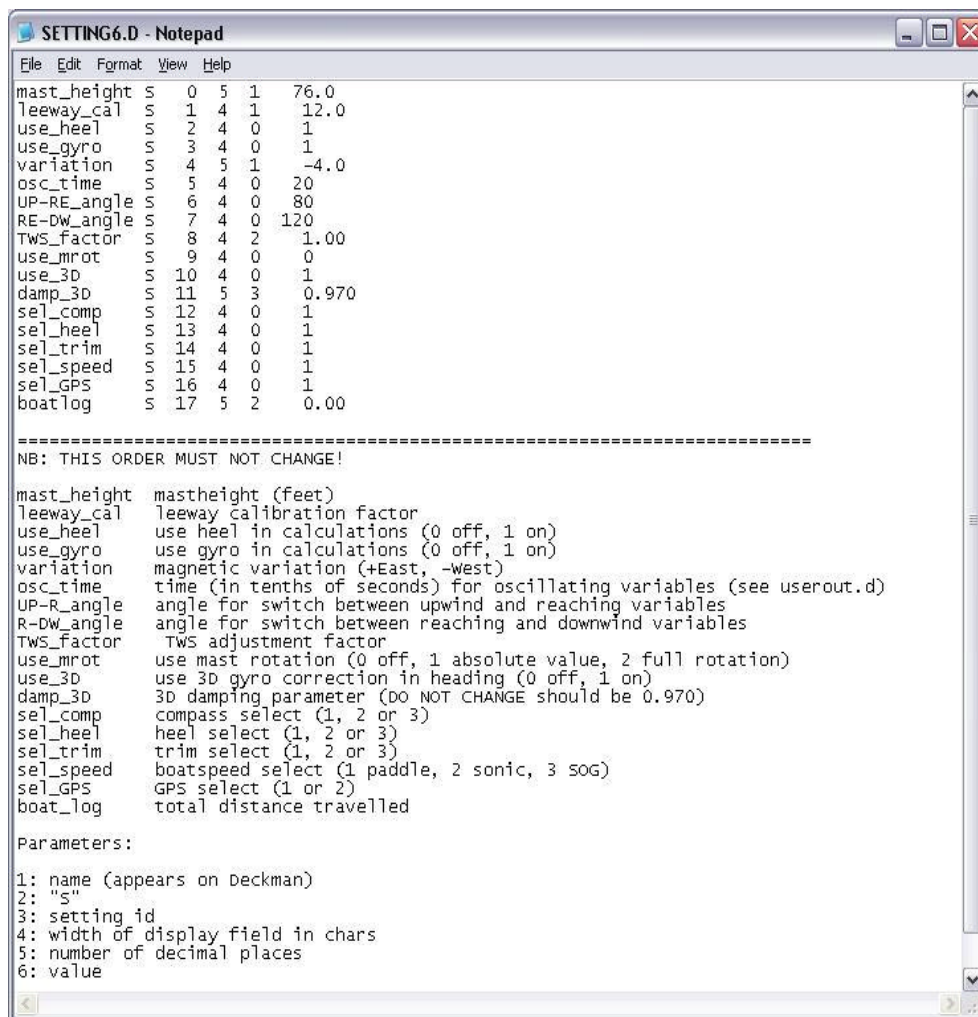
- 6) The WTP2 will begin to boot up normally but when it gets to loading the WTP software it will stop because of the presence of the `STOP.TXT` file.

This will be shown in HyperTerminal as follows:

```
WTP 2 - HyperTerminal
File Edit View Call Transfer Help
[Icons]
SysInit: GDIBase=804f60e8 IDIBase=80517860 KData=8051d800
Windows CE Kernel for i486 Built on Jun 24 2004 at 18:23:42
g_PageDir = 80523000
RTC - Status Reg B - 0x02
X86Init done, OEMAddressTable = 80224fb8.
OEMIoControl: Unsupported Code 0x101008c - device 0x0101 func 35
OEMIoControl: Unsupported Code 0x10100d0 - device 0x0101 func 52
OEMIoControl: Unsupported Code 0x10100f8 - device 0x0101 func 62
WTP Startup
OEMIoControl: Unsupported Code 0x10100f8 - device 0x0101 func 62
user def setup good
Index 2 Name PCINE100CE1
WTP has been halted by presence of Stop.txt file.
Windows IP configuration
Ethernet adapter {PCINE100CE1}:
IP Address . . . . . : 192.168.0.2
Subnet Mask . . . . . : 255.255.255.0
IP Address . . . . . : 0.0.0.0
Subnet Mask . . . . . : 0.0.0.0
Connected 3/17/21  ANSI  38400 BPS  CTRL  CAPS  NUM  Capture  Print echo
```

- 7) Once you get to the screen shown in step 6, re-connect to the WTP2 with FTP. You will be presented with the root directory again (as per image in step 2)
- 8) Copy the `CALIBS`, `DATA` and `FILTERS` directories to your desktop. Also copy `WTPImp.exe`. This will give you a full working backup if you need to undo the changes you are making.
- 9) Delete the file `WTPImp.exe` and replace it with the updated one.
- 10) Once this new file is copied you may need to amend two files in the data directory for the WTP to run - if your directory contains `setting5.d` and `sample07.d` files you will need to carry out the changes below.
- 11) Open the `DATA` directory, copy `setting5.d` and `sample07.d` to the desktop, as we need to modify these 2 files.

- 12) Copy setting5.d and rename to setting6.d. This file should have the same lines as below (values will be different to this sample as they are relevant only to your system).



```

SETTING6.D - Notepad
File Edit Format View Help
mast_height S 0 5 1 76.0
leeway_cal S 1 4 1 12.0
use_heel S 2 4 0 1
use_gyro S 3 4 0 1
variation S 4 5 1 -4.0
osc_time S 5 4 0 20
UP-RE_angle S 6 4 0 80
RE-DW_angle S 7 4 0 120
TWS_factor S 8 4 2 1.00
use_mrrot S 9 4 0 0
use_3D S 10 4 0 1
damp_3D S 11 5 3 0.970
sel_comp S 12 4 0 1
sel_heel S 13 4 0 1
sel_trim S 14 4 0 1
sel_speed S 15 4 0 1
sel_GPS S 16 4 0 1
boat_log S 17 5 2 0.00

=====
NB: THIS ORDER MUST NOT CHANGE!

mast_height mastheight (feet)
leeway_cal leeway calibration factor
use_heel use heel in calculations (0 off, 1 on)
use_gyro use gyro in calculations (0 off, 1 on)
variation magnetic variation (+East, -west)
osc_time time (in tenths of seconds) for oscillating variables (see userout.d)
UP-R_angle angle for switch between upwind and reaching variables
R-DW_angle angle for switch between reaching and downwind variables
TWS_factor TWS adjustment factor
use_mrrot use mast rotation (0 off, 1 absolute value, 2 full rotation)
use_3D use 3D gyro correction in heading (0 off, 1 on)
damp_3D 3D damping parameter (DO NOT CHANGE should be 0.970)
sel_comp compass select (1, 2 or 3)
sel_heel heel select (1, 2 or 3)
sel_trim trim select (1, 2 or 3)
sel_speed boatspeed select (1 paddle, 2 sonic, 3 SOG)
sel_GPS GPS select (1 or 2)
boat_log total distance travelled

Parameters:
1: name (appears on Deckman)
2: "s"
3: setting id
4: width of display field in chars
5: number of decimal places
6: value

```

- 13) Copy sample07.d and rename to sample08.d. Once you have renamed this file, you will need to add the following data to the file:

At the top of the file, change the line:

```
16 4 24
```

to read:

```
16 4 25
```

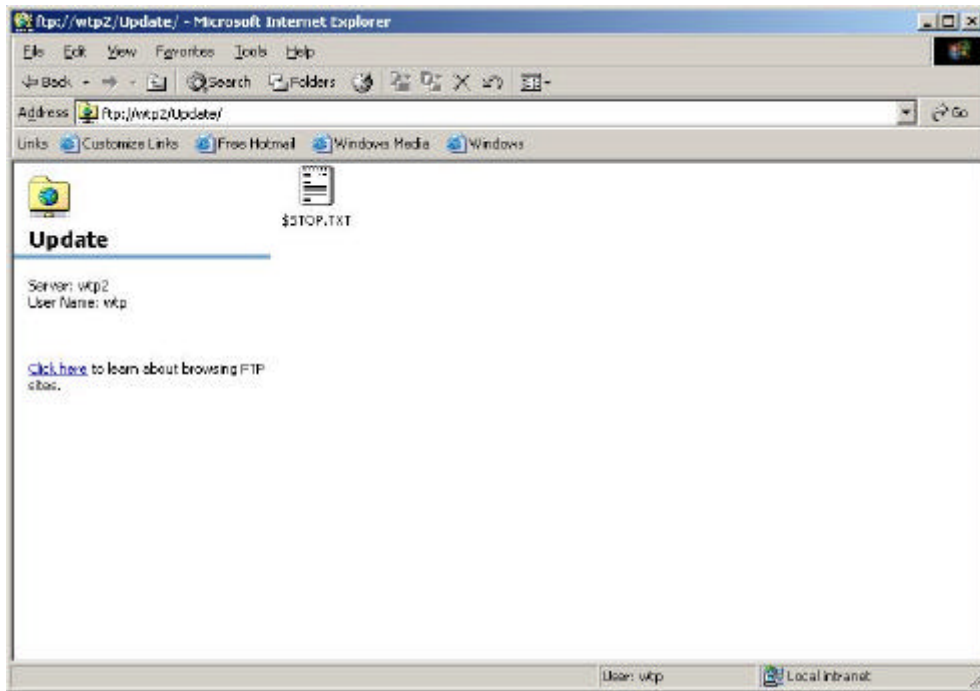
At the bottom of the [DERIVED] section, add the following line:

```
TargetBSpd      32  null.cal      TargBSpd.fil
```

Once you have made these changes, save the file.

- 14) Copy the new files (setting6.d and sample08.d) back into the DATA directory.

- 15) Open the UPDATE folder and rename STOP .TXT to \$STOP .TXT (should end up as shown below)



- 16) Once this file has been renamed, re-start the WTP2.

- 17) The WTP2 will boot up normally - in Hyperterminal this is indicated by the phrase "End of Startup"

- 18) The WTP2 has now been upgraded to the latest software version.

B&G Technical Support
27/04/06

B&G Ltd.
Premier Way
Abbey Park
Romsey
Hampshire
SO51 0NU
UK

www.bandg.com

T: +44 (0) 1794 518448
F: +44 (0) 1794 518077
E: support@bandg.com