

An aerial photograph of a sailboat with a large white sail and a smaller orange sail, sailing on a deep blue ocean. The boat is moving towards the bottom left, leaving a white wake behind it. The water's surface is textured with small waves and ripples.

B&G 2019

A Passion for Sailing

SAILING ELECTRONICS
FOR CRUISING AND RACING



Contents

| | |
|---------------------------------|---------|
| B&G brand | 04 - 07 |
| Our Heritage | 04 - 05 |
| Our Journey | 06 |
| Top Innovations | 07 |
| Key Components by Activity | 08 - 13 |
| Coastal Cruising | 08 |
| Club Racing | 09 |
| Bluewater Cruising | 10 |
| Performance Racing | 11 |
| Superyacht | 12 |
| Grand Prix Racing | 13 |
| Chartplotters | 14 |
| B&G Sailing Features | 15 |
| Vulcan | 16 - 17 |
| Zeus ³ | 18 - 19 |
| Zeus ³ Glass Helm | 20 |
| Chartplotter Accessories | 21 |
| Radar | 22-23 |
| Triton ² Instruments | 24-25 |
| Triton ² Autopilots | 26 - 27 |
| H5000 Instruments | 24 - 25 |
| H5000 Autopilots | 31 |
| WTP3 | 32 - 33 |
| Communications | 34 |
| Our Support | 35 |

Volvo Ocean Race

| | | | |
|-----------|-------------------|-----------|--------------------|
| 1973-1974 | Saluya II | 2001-2002 | Illbruck Challenge |
| 1977-1978 | Flyer | 2005-2006 | ABN Amro |
| 1981-1982 | Flyer II | 2008-2009 | Ericsson 4 |
| 1985-1986 | L'Esprit d'Equipe | 2011-2012 | Groupama 4 |
| 1989-1990 | Steinlager2 | 2014-2015 | Abu Dhabi |
| 1993-1994 | NZ Endeavour | 2017-2018 | Dongfeng Race Team |
| 1997-1998 | EF Language | | |

Records

Round World Non Stop
Single Handed – Macif 2018
Crewed – IDEC 2017

Vendee Globe Podium (1/2/3) 2016

Sydney Hobart Line Honours 2017

Maxi Worlds 2018

Super Maxi - Topaz
Wally - Lyra
Mini Maxi - Momo

B&G Heritage

Grand Prix racing is our heritage.

For more than 60 years, B&G sailing equipment has been a key component of the world's fastest sailboats, from racing around the marks in the America's Cup to racing around the world in the Volvo Ocean Race.

In this environment, precision and accuracy are everything. One subtle shift in the wind, a tenth of a knot of boat speed or making the correct sail choice for the next leg, can create an unbeatable advantage.



Our commitment

B&G delivers Grand Prix racing technology to every sailor.

Listen to the call of the sea and explore with ease, knowing you have the best equipment on board to ensure you have a smooth journey, wherever you sail.

Our Journey

We want you to spend more time sailing and less time planning or configuring your boat's systems. Reliability and precision are in our DNA, connectivity is our future.



Embark

Nautical maps, made simple!

High-quality charts in a clear and sleek design for your phone, tablet and computer.

Create waypoints, plan routes anywhere and sync them to your chartplotter on board your boat.

Download now for free, or visit www.letsembark.io



NAVIO²

Enhance your boat with vessel-wide monitoring and control capabilities.

Extend the functionality of your chartplotter to monitor and display a wealth of information.

Compatible with Zeus³ chartplotters, this application will give you instant information on your vessels key systems including: engines, generators, lighting, fuel consumption, batteries and much more.

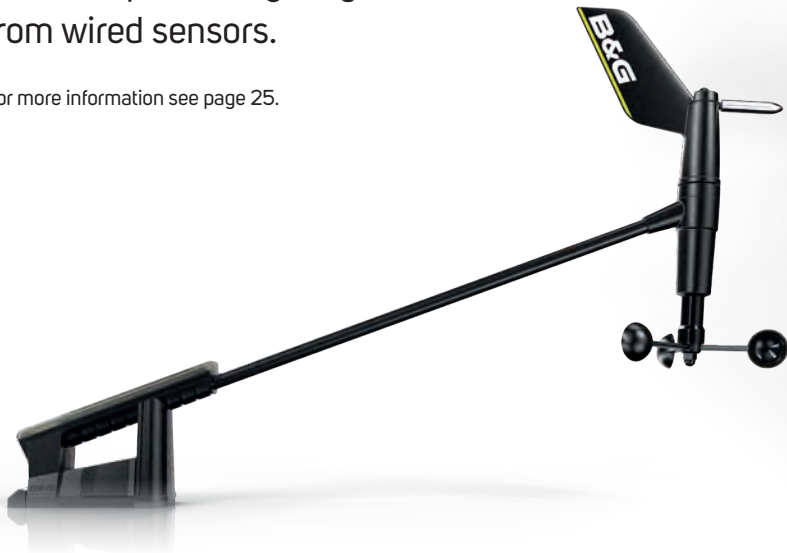


Top Innovations 2018

Wireless wind sensor WS320

Precise wind data with no compromises. This wireless sensor provides performance at a level previously only available from wired sensors.

For more information see page 25.



HALO™24

Introducing an almost real-time view, with industry-first 60 RPM operation for the ultimate in collision avoidance. Detect dangers immediately at ranges of up to 48 nautical miles from a compact light dome radar.

For more information see page 24.



Coastal Cruising

Vulcan Chartplotter

Accurate and clear charting is essential while exploring unfamiliar waters, Vulcan delivers this and more with SailSteer, Laylines and SailingTime for accurate sailing navigation.

B&G's Link app creates a virtual second navigation station on your phone or tablet, for navigation anywhere on board.



Broadband Radar™

Sailing at night or in fog can be stressful, Broadband Radar™ will display hazards, traffic and channel markers clearly on screen to guide you confidently to your destination.

Overlay radar onto your chart to help identify fixed objects while tracking other vessels with MARPA and AIS for ultimate situational awareness.



Triton² Pilot

Integrating with your Triton² instruments and Vulcan chartplotter the Triton² Pilot provides a reliable extra pair of hands when desired. Steer to heading, wind angle or towards a waypoint with this easy to use and dependable autopilot. Pair the Triton² with the WR10 wireless remote for complete control anywhere on board.



VHF Communications

Combine a V60 DSC VHF at the chart table with a wireless H60 handset for wire-free calls on deck for easy communication at any time. Class-B AIS allows you to "see and be seen", sharing your position with local users while displaying other vessels on your screen.



Club Racing

VHF Communication

V20 provides a simple to use and fully featured DSC VHF. Use Dual-Watch to follow the race committee on a dedicated channel, while monitoring your normal working channel at the same time. Initiate a boat-to-boat call to an AIS target direct from your B&G chartplotter screen.



Vulcan Chartplotter

At-a-glance knowledge that you are in safe waters while racing is crucial.

Vulcan takes the core navigation element of a chartplotter and adds B&G's unique scaled StartLine feature, tidally corrected Laylines and accurate time to mark with SailingTime.

B&G's Link app provides a secondary on-the-rail navigation station on your phone or tablet so you can be fast and safe.

Triton² Instruments

Triton² provides key sailing data – boat speed, wind, heading, heading on the opposite tack, laylines and more. Bright high-contrast displays with large clear data, viewable in all conditions. Easy-to-use, but powerful, features include WindPlot, AIS view and Race Timer.



WS320 Wireless Wind

The WS320 wireless wind sensor provides an easy and lightweight installation with no performance compromises vs. a wired sensor. WS320 adds further corrections for boat heel when paired with the Precision-9 multi-axis heading sensor.



Bluewater Cruising

Zeus³ Chartplotter

Zeus³ includes B&G's clearest SolarMax HD touchscreen alongside a fully-functional keypad for control in all conditions, while the back-lighting dims to almost zero for strain-free night passages. Zeus³'s multi-station capability allows you to view and control charting, radar, autopilot, ForwardScan™ and much more from any display.



ForwardScan®

The ideal companion for exploring badly-charted and unfamiliar anchorages, B&G's award-winning ForwardScan® forward-looking sonar shows what lies ahead of your boat under the water, with approaching depth information.

Pilot

When long distance cruising the autopilot is an extra crew-member. B&G Pilots are relied on by Vendée Globe sailors and offshore record holders to steer their boat safely in almost any conditions.



HALO24 Radar

Offshore, the requirements for a radar are changed – early warning of collision avoidance and tracking weather systems become key. HALO24 provides the leading situational awareness from a dome radar, ensuring long-range detection of targets while retaining close-range performance.



System Integration

When long-distance cruising your boat is your home, understanding the status of systems and being able to control them easily is essential for confidence and enjoyment. Zeus³ integrates with digital switching and monitoring systems, including Naviop, providing a full Information Display for the yacht.

Performance Racing

Vertical Wind Sensors

Wind speed and direction are two of the most crucial pieces of data for the navigator, the performance of B&G's wind sensors, combined with the advanced wind calibrations available in H5000, can easily make the difference at the finish line.



HV Displays

Designed to provide the key sailing information within the crew's line of sight while sailing, the HV displays are built to survive in one of the most exposed areas on the boat, delivering absolute clarity from almost any angle in any weather.



H5000 Instruments

B&G's highly-developed and tested wind algorithms, including 3D Motion correction and dedicated wind corrections, provide the accurate data required to make race-winning decisions.

Integration

H5000 integrates openly with 3rd party software and systems via NMEA standard messaging along with B&G's own powerful serial H-Link protocol and Ethernet websockets protocols. B&G's open approach to integration allows tactical software full access to instrument data, while allowing customization.



Sensors

An instrument system can only be as good as the sensor data. H5000 supports a wide range of sensors – from performance sensors such as boat speed or heel angle, to monitoring rig systems with hydraulic cylinder position sensors or loadcells.



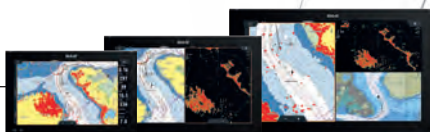
Superyacht

© Carlo Borlenghi / Nautor Swan

Zeus³ Glass Helm

Zeus³ Glass Helm is a super-fast, large-screen multifunction display that sits at the heart of your fully integrated navigation system. Glass Helm provides premium touchscreens up to 24" with remote keypad control and multiple units can be networked around the yacht.

Glass Helm includes B&G's unique sailing features, combined with radar, charting, sonar and much more.



H5000 Instruments

With an almost limitless number of display options, H5000 provides a full yacht information system based around a powerful central processing unit.



HALO24 Radar

HALO24's early warning of collision combined with weather tracking provides amazing situational awareness from a dome radar, ensuring long-range detection of targets while retaining close-range performance.



HV Displays

Designed to provide the key sailing information within the crew's line of sight while sailing, the 40/40 HV displays allow data to be read clearly even from the helm of the largest yachts.



V90S VHF

A communications solution for larger yachts, V90S provides options to run with up to 4 wired V90S and 2 wireless H50 handsets plus features including handset-to-handset intercom, hailer, foghorn and record/replay options to ensure all local communication needs are covered.





© Paul Wyeth - pwpictures.com

Grand Prix Racing

Vertical Wind Sensors

Recognising the early stages of a forecast change in the wind can be a race-winning moment, the performance of B&G's wind sensors, combined with the advanced wind calibrations available in WTP3, can easily make the difference at the finish line.



HALO24 Radar

HALO24 provides high accuracy target tracking, allowing you to keep an eye on your competitors' speed and direction while they are out of sight. VelocityTrack™ target colouring can quickly alert you to a change in relative speeds. Halo will give you situational awareness of traffic and hazards on the race course, while allowing you to see weather cells and fronts as they approach.



H5000 Pilot

H5000 Pilot uses Expert Systems to adjust rudder, target course and wind angles to keep the boat tracking fast and safe. Every boat that finished on the podium of the last Vendée Globe exclusively used H5000 Pilots.

WTP3 Instruments

WTP has proven itself as the world's most successful Grand Prix instrument system, by offering high-speed data-acquisition across multiple redundant CAN networks, a vast range of 3rd party sensor support, 3D Motion correction and the ability to create custom user functions using JavaScript.

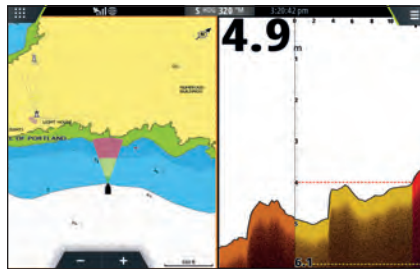


Zeus³ Chartplotter

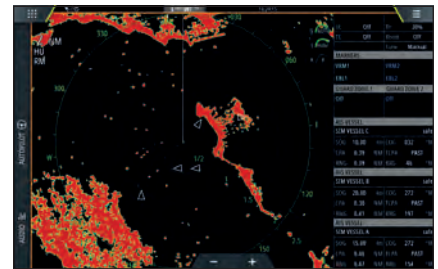
Working alongside a tactical PC package, the Zeus³ adds flexibility and power to any Grand Prix racing system. Acting as the primary radar, AIS display for tracking competitors and traffic, MOB display for AIS SART devices and providing monitoring and digital switching alongside chart and instrument data displays.

© Daniel Hug / barba.no

B&G offers you the widest choice of charts for sailing, from mapping leaders C-MAP and Navionics® to specialist chart provider NV Digital and many more for accurate, informed navigation.



See what lies ahead under the water with approaching depth information. Sail poorly-charted or unfamiliar waters confidently with a clear image of the bottom ahead of your boat.



Access and monitor your radar output conveniently from the chartplotter display for total control and awareness in a fully integrated sailing navigation system.

Sailing Features

As sailors, we know that cruising or racing in a sailing boat is different. Enjoy stress-free journeys and get where you want to go quickly and safely with B&G sailing specific software.

B&G SailSteer provides all your important instrument and navigation information in one view.

Wind

Wind Angle and Direction, referenced to the boat and compass

Waypoint

Bearing to next waypoint, when aligned with layline it is time to tack



Current Course Overview

Heading, Course Over Ground and your current layline

Tide

Tide/Current set and rate relative to boat

Laylines

Current and opposite tack laylines, providing opposite tack course



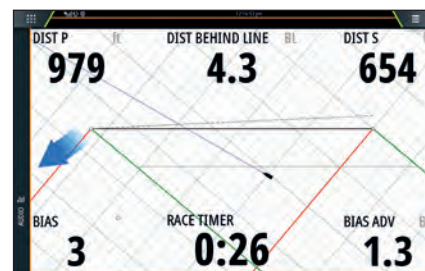
Laylines & SailingTime

See your course and know when to tack to minimise beating. Laylines take into account tidal effects and displays wind shift history.



PredictWind

High resolution wind forecasting and planning for sailing. Integrated exclusively on B&G's Zeus and Vulcan products, and available via a Wi-Fi connection upon registration.



RacePanel

Be on the line at full speed as the gun goes. Get the best start in the fleet, with time, distance and positioning data.



Vulcan

Perfect for small boats including coastal cruisers and club racers. The high-resolution super-bright screen enables you to read even in direct sunlight and Vulcan's responsive touch screen gives you easy, fingertip control.

| | |
|-----------------------------|---------------|
| Vulcan 7 | 000-14082-001 |
| Vulcan 7 + 3G Radar Bundle | 000-14079-001 |
| Vulcan 9 | 000-13214-001 |
| Vulcan 9 + C-MAP MAX-N US | 000-13214-008 |
| Vulcan 9 + 3G Radar Bundle | 000-13984-001 |
| Vulcan 12 | 000-14149-001 |
| Vulcan 12 + C-MAP MAX-N US | 000-14150-001 |
| Vulcan 12 + 4G Radar Bundle | 000-14157-001 |

Vulcan Key Features

- B&G sailing software
- Pinch-to-zoom screen
- Built-in WiFi
- Broadband Radar™ compatible
- ForwardScan™ compatible
- NMEA2000®

SIZES AVAILABLE



Radar and Chart bundles are also available, please visit the website for more information.



Adding a Vulcan to your boat is easy:

- Just add power for basic navigation and chart plotting functionality, with integrated high-precision GPS antenna
- For advanced sailing features simply add: wind sensor, compass sensor and speed log
- Mount where and how you want, with flush and bracket mounting options
- Compatible with your existing B&G system
- Compatible with 3rd party products and systems, with NMEA 2000



Zeus³

Designed for medium to large boats, Zeus³'s ultra-bright, wide-angle SolarMax HD IPS displays give you maximum visibility in all-weather conditions.

Choose between the touchscreen and the rotary keypad to navigate and enjoy the fast processing technology that provides you with super-responsive operation and smooth chart re-draw.

Combined with built-in connectivity to support multi-stations, makes it the perfect chartplotter for blue water cruisers and performance racers.

Zeus³ Key Features

- B&G sailing software
- Multi-touch screen and keypad control
- Fast processing
- SolarMax HD IPS display for clearer & wider viewing
- Built in WiFi, ForwardScan™, NMEA 2000™ and Ethernet connectivity
- Internal 10Hz GPS
- Integrated autopilot controller

| | |
|--|---------------|
| Zeus ³ 7 | 000-13241-001 |
| Zeus ³ 7 + 4G Radar Bundle | 000-13802-001 |
| Zeus ³ 9 | 000-13242-001 |
| Zeus ³ 9 + 4G Radar Bundle | 000-13803-001 |
| Zeus ³ 12 | 000-13243-001 |
| Zeus ³ 12 + 4G Radar Bundle | 000-13804-001 |
| Zeus ³ 16 | 000-13244-001 |

SIZES AVAILABLE



Radar bundles are also available, please visit the website for more information.



Designed for sailors, built for sailing

View

B&G's SolarMax HD IPS screen provides an ultra-sharp image, with huge viewing angles and amazing chart presentation.

Perform

Fast processing and efficient design provide super-responsive operation and smooth chart redraw.

Control

Advanced touch screen offers reliable operation even in heavy rain, while the full function keypad provides a secondary control option.

Integrate

Built-in technology delivers connectivity with multi-station radar, chart and sonar sharing, while HDMI out (12" and 16" units) provides flexibility in system design.





Zeus³ Glass Helm

Zeus³ Glass Helm is perfect for larger bluewater cruising yachts and Superyachts.

Its super-fast, smart multifunction navigation system provides real time sailing information. Realise unprecedented sailing navigation with B&G's composite SailSteer sailing information, WindPlot and SailingTime calculations.

Zeus³ Glass Helm Key Features

- B&G sailing software
- Low-profile, all glass touchscreen
- Ultra-bright, wide-angle, full HD display
- Built-in powerful processor (no black box required)
- NMEA 2000, 0183, Ethernet and WiFi compatibility
- HDMI and Video inputs
- Integrated Pilot control
- HALO24 Radar™ compatible

| | |
|---|---------------|
| Zeus ³ Glass Helm 16. System Pack | 000-14006-001 |
| Zeus ³ Glass Helm 16. Display only | 000-14007-001 |
| Zeus ³ Glass Helm 19. System Pack | 000-14008-001 |
| Zeus ³ Glass Helm 19. Display only | 000-14009-001 |
| Zeus ³ Glass Helm 24. System Pack | 000-14010-001 |
| Zeus ³ Glass Helm 24. Display only | 000-14011-001 |

SIZES AVAILABLE



Chartplotter accessories



Barometer

Barometric trend is the offshore sailor's friend, a warning of a pending storm or calm. B&G's high resolution barometer provides data resolution of 0.1mb for highly accurate trend data.

| | |
|---------------------------|---------------|
| High-Resolution Barometer | 000-11552-001 |
|---------------------------|---------------|



SonicHub® 2

The B&G SonicHub® 2 features integrated Bluetooth®, allowing you to stream music from a smartphone or tablet, playback audio/video from a USB storage device or listen to radio, all with full control from your Zeus³ or Vulcan display.

| | |
|------------------------|---------------|
| SonicHub® 2 | 000-12302-001 |
| 6.5" Speakers (pair) | 000-12306-001 |
| WM-3 Satellite Antenna | 000-11076-001 |



Zeus Controller

Control your Zeus³ display with the ZC2's intuitive keypad and multi-directional controller. Available in landscape or portrait versions, the ZC2 can also be used to control a B&G Pilot via any networked display.

| | |
|-----------------------|---------------|
| ZC2 - Portrait mount | 000-12365-001 |
| ZC2 - Landscape mount | 000-12513-001 |



Class-B AIS

See and be seen. Reduce your risk of collision with this latest generation, fully integrated, Class-B AIS transponder. Compact in size, lightweight, fully waterproof, with low power draw.

| | |
|-------------------------------|---------------|
| NAIS-500 Class B AIS system | 000-13609-001 |
| NSPL-500 AIS Antenna Splitter | 000-13612-001 |



ZG100 GPS

The ZG100 GPS Antenna provides high accuracy position, course and speed ten times every second ensuring maximum confidence in the displayed position. The ZG100 also includes a multi-axis heading sensor for data optimisation and backup heading data.

| | |
|-------------------|---------------|
| ZG100 GPS Antenna | 000-11048-001 |
|-------------------|---------------|



ForwardScan®

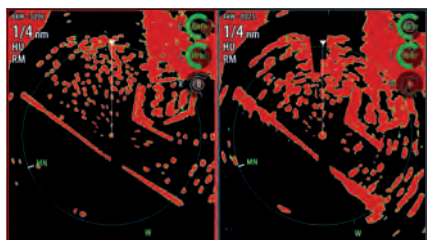
ForwardScan® forward-looking sonar shows you what lies ahead under the water with approaching depth information. Enjoy a clear and easy to read image of the bottom ahead of your boat as ForwardScan® transmits and receives up to ten times faster for real-time updates.

| | |
|---|---------------|
| ForwardScan® Transducer | 000-11674-001 |
| ForwardScan® Transducer (no sleeve or plug) | 000-11675-001 |
| SonarHub™ Sounder Module | 000-11142-001 |

Radar

See Near and Far with One Compact Dome

B&G radars deliver excellent short and long-range performance, providing a clear view of your surroundings thanks to Broadband Radar™ and pulse compression technologies.



Dual Range Mode

Keep an eye on far away weather cells, while watching for collision dangers up close.

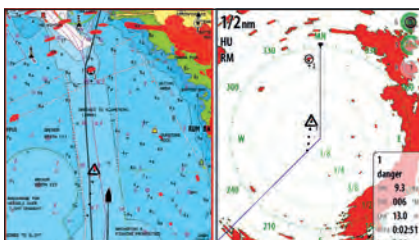
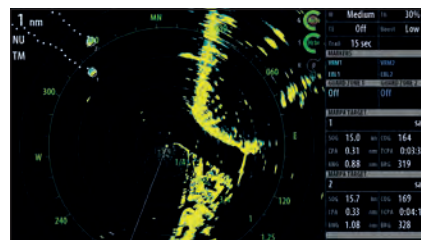


Chart Overlay

Overlay the radar image on the chart to immediately flag up any uncharted obstructions and vessels.



MARPA target tracking

Track up to 10 MARPA targets simultaneously



Broadband 3G Radar™

Perfect for smaller sailboats, this radar's emissions are lower than a mobile phone. See targets up to 24nm away and enjoy InstantOn™, our solid-state technology that eliminates lengthy warm-up time.

Broadband 3G™ Radar

000-10422-001



Broadband 4G Radar™

From tight manoeuvres through crowded passages to long-range navigation, this radar features beam sharpening with excellent target separation and allows you to see targets up to 36nm away.

Broadband 4G™ Radar

000-10423-001

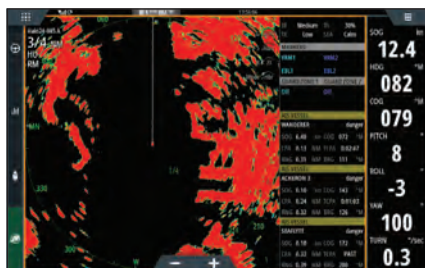
NEW HALO24

HALO24 revolutionizes radar by offering an almost real-time view, with industry-first 60 RPM operation at close range for the ultimate in collision avoidance.



HALO24

000-14538-001

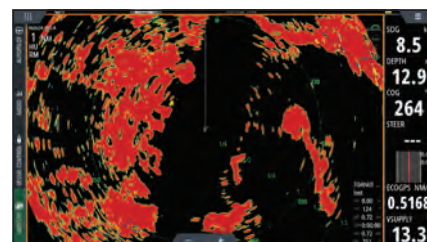


The Ultimate View for Collision Avoidance

Get ultra-fast updates with a 360 degree sweep every second, thanks to its industry-first 60 RPM rotation at ranges up to 1.5 nautical miles.

VelocityTrack™ Doppler Technology Built-In

VelocityTrack™ technology provides instant visual feedback on whether targets are approaching you or moving away, by using on-screen colour coding.



Ready whenever you are

HALO24 radar wakes instantly from its low-power standby mode, delivering this high-speed radar coverage in seconds.



Triton²

Triton² instruments and autopilots bring grand prix technology to coastal cruising and club racing sailors.

Triton² Display

Your course looks clearer with Triton² displays. See the data you rely on: speed, depth, wind and more, in full colour on Triton²'s low-profile, intuitive displays.

Triton²'s low profile design will enhance any cockpit. Whether you mount the display at the helm, on the bulkhead or over the hatch, you'll always be able to see the data you need.

Triton² Key Features

- Display wind, speed, depth, heading, GPS, AIS and more
- Large 4.1-inch colour display
- Brightest transfective LCD screen
- Unique sailing features including SailSteer and WindPlot
- Configurable AIS screen
- Easy to use, easy to install
- Low power consumption

Triton² Display

000-13294-001

Triton² Sensors



DST800

A compact multisensor that offers depth, speed and temperature data. Directly connected to the network for easy installation.

DST800

000-10960-001



Precision 9 Compass

The Precision 9 provides accurate heading data for steering compass, autopilot, True Wind Direction calculation and stabilisation of radar displays.

Precision 9 Compass

000-12607-001

WS300 Wind Series

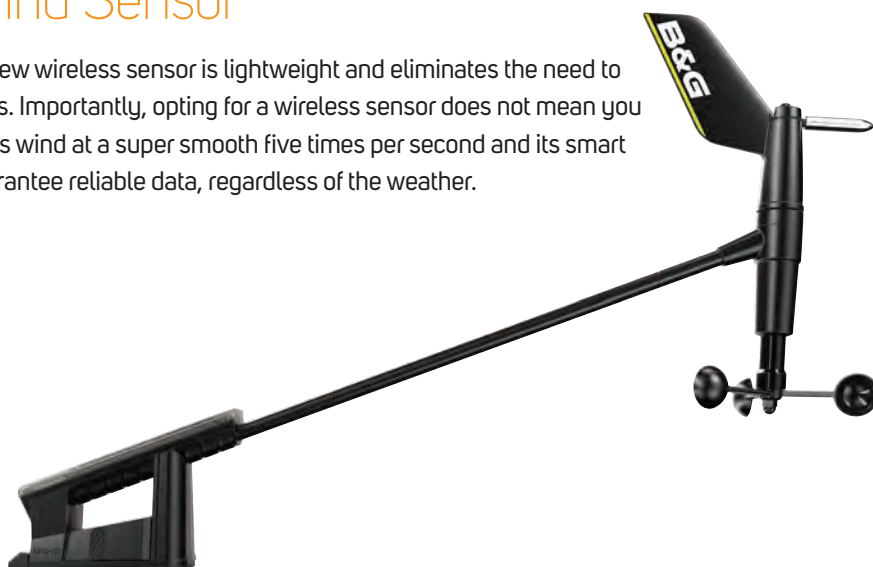
A new range of high precision B&G wind sensors, designed for cruising and club racing sailors.

WS320 Wireless Wind Sensor

Installation is no longer a challenge. This new wireless sensor is lightweight and eliminates the need to run wires through the mast of smaller boats. Importantly, opting for a wireless sensor does not mean you have to sacrifice accuracy, WS320 outputs wind at a super smooth five times per second and its smart rechargeable power management will guarantee reliable data, regardless of the weather.

WS320 Features

- Easy installation
- Wireless communication
- Smart power management
- Superior data accuracy
- Wind tunnel validated aerodynamics
- Connects to NMEA 2000® via remote interface



WS320 Wireless Wind Pack with interface

000-14383-001

WS310 Wind Sensor

Designed for cruising and club racing sailors. WS310 offers high performance and outstanding data accuracy, with improved aerodynamics. Suitable for all yachts, it is available with 20, 35, 50 and 80m cables.



WS310 Features

- Superior data accuracy
- Wind tunnel validated aerodynamics
- 4 cable options from 20 to 80m
- Connects to instrument network via interface

WS310 Wind Sensor Pack, 20 cable, interface

000-14382-001



Triton² Autopilots

Designed for sailors and tested in every one of the world’s oceans, a Triton² Pilot will helm your boat hour after hour - better than most helmsmen.

Triton² Pilots feature intelligent sail steering, with compass and wind steering. Smart Manoeuvre controls allow you to tack at the touch of a button, and chartplotter integration enables waypoint and route navigation. The keypad offers precise control of all the autopilot functions, automatically displayed on a nearby Triton² display.

Triton² Packs

It is easy to build your Triton² system with one of our starter packs that include network components and a choice of key instrument sensors.



**Speed/
Depth Pack**
Includes: Triton² Display, DST800 Speed/depth/Temp Sensor, Micro-C Backbone kit.



**Speed/Depth
/Wind Pack**
Includes: Triton² Display, WS310 wired wind sensor, DST800 Speed/Depth/Temp sensor, Micro-C Backbone kit.



**Speed/Depth
/Wireless Wind Pack**
Includes: Triton² Display, WS320 wireless wind sensor, DST800 Speed/Depth/Temp sensor, Micro-C Backbone kit.

| | |
|---------------------------------------|---------------|
| Triton ² Speed, Depth Pack | 000-13298-001 |
|---------------------------------------|---------------|

| | |
|---|---------------|
| Triton ² Speed, Depth, Wind Pack | 000-13299-001 |
|---|---------------|

| | |
|--|---------------|
| Triton ² Speed, Depth, Wireless wind Pack | 000-14956-001 |
|--|---------------|

Build your B&G autopilot system

1. Choose your display

Triton² Display



OR

Vulcan



OR

Zeus³ (Pilot control is integrated)



2. Choose your Triton² Pack

Select a Triton² Pilot Pack to match your boat (includes computer, compass, rudder feedback unit and network starter kit).

Triton² Pilot Computer / Compass / Rudder Feedback Unit



| | |
|---|---------------|
| Triton ² Pilot Controller | 000-13296-001 |
| Triton ² Pilot Controller & Display Pack | 000-13561-001 |
| NAC-2 Core Pack | 000-13335-001 |
| NAC-3 Core Pack | 000-13336-001 |

3. Choose a drive unit

B&G Pilots are compatible with a number of third-party drive units in addition to B&G models. Consult your B&G specialist.

Drive units



Further drive units to suit a range of applications are available, see www.bandg.com

| | |
|-----------------------------------|---------------|
| RAM T0 - 12v (26ft-35ft boats*) | 000-13902-001 |
| RAM T1 - 12v (30ft - 40ft boats*) | RAM-T1-12V |
| RAM T2 - 12v (40ft - 50ft boats*) | RAM-T2-12V |
| RAM T2 - 24v (40ft - 50ft boats*) | RAM-T2-24V |
| RAM T3 - 12v (50ft+ boats*) | 000-13788-001 |
| RAM T3 - 24v (50ft+ boats*) | RAM-T3-24V |

*Consult your dealer to confirm the drive suitability for your boat.



H5000

B&G's H5000 instrument and autopilot system delivers sailing-specific features and powerful race-proven technology with an ultra-fast CPU, convenient web-style interface, full colour displays and a dedicated autopilot.

3D Motion



Wind measurement is affected by the pitching and rolling motion of the yacht, which distorts the wind measurement at the top of the mast. The solution is 3D Motion correction - H5000 takes data from multiple sensors including high-specification rate-gyros to correct for induced wind, providing the best wind solution available in an instrument system.

H5000 Browser Interface



Browser-based configuration of the H5000 system enables advanced calibration, set-up and diagnostics without the hassle of negotiating a complex and unfamiliar menu system. The powerful web-style interface can be accessed via PC, tablet or smartphone (tablet/smartphone requires WiFi interface).

StartLine



H5000's Start Line feature provides high-resolution data for distance to line, distance to line ends, line bias and the distance gained by starting at the favoured end. H5000 Start Line uses BowPosition, calculating the position of the yacht's bow ten times every second. For the ultimate in starting performance, interface H5000 with a Zeus³ system with scaled StartLine view.

Advanced Calibration



H5000 offers the ultimate in high resolution sensor input, the best processing techniques and optimum system calibration including AutoCal routines, with corrections for almost every function for the most precise data.

H5000 Instruments



H5000 Displays

The 5-inch, sunlight viewable, Graphic colour screen with a highly intuitive user interface is packed

with sailing features including SailSteer, Start Line, AIS display and Pilot status. The bonded glass display gives zero condensation and enhanced contrast. 5-inch monochrome, segmented Race display also available.

Graphic Display Features

- Start Line
- SailSteer
- AIS repeater
- Pilot status
- WindPlot
- Quick, context-based menus
- Bright colour display

Race Display Features

- High Contrast 5-inch display
- Visual target indicator
- Low power consumption

| | |
|---------------|---------------|
| H5000 Graphic | 000-11542-001 |
| H5000 Race | 000-11543-001 |



HV Displays

HVision bonded glass displays provide ultra-clear instrumentation with zero

condensation risk. Designed to be installed on the mast in the sailor's line-of-sight, HV Displays show almost any information on the system. When paired with H5000 Hercules or Performance CPUs HV Displays will auto-switch data based on point of sail or pre-start status. Getting the crucial information in the right place at the right time.

| | |
|------------------|---------------|
| 10/10 HV Display | 000-11087-001 |
| 20/20 HV Display | 000-11088-001 |
| 30/30 HV Display | 000-11089-001 |
| 40/40 HV Display | 000-11090-001 |

Instrument CPU



The system is powered by a smart Central Processing Unit (CPU) which runs three levels of software, Hydra, Hercules and Performance to match your sailing requirements.

H5000 CPU function levels

| FUNCTIONS | Hydra | Hercules | Performance |
|--|-------|----------|-------------|
| Performance Wind Filtering | • | • | • |
| 3D Motion corrected Wind support | | • | • |
| Ground Wind Speed and Direction | | | • |
| SOG as Boat Speed option | • | • | • |
| Dynamic Boat Speed Damping | | • | • |
| Polar Table and functions | | • | • |
| HV Display Context Switching mode | | • | • |
| Start Line proximity, with Bow Positioning | • | • | • |
| 16 Custom User Channels | • | • | • |

CALIBRATION

| | | | |
|--|---|---|---|
| AutoCal routines, including True Wind correction | • | • | • |
| Advanced True Wind Speed correction | | • | • |
| Boat Speed Linearity/Heel correction | | • | • |
| Cubic Spline interpolation | • | • | • |

INTERFACING

| | | | |
|---------------------------------------|---|---|---|
| Selectable NMEA0183 Input/Output | • | • | • |
| H5000 Webserver browser based control | • | • | • |
| H-Link Communications | | • | • |
| GoFree websockets v2 | • | • | • |

SENSOR SUPPORT

| | | | |
|---|---|-------|---------|
| Dual Boat Speed input | • | • | • |
| Dual Wind Sensors (switching on wind angle) | | | • |
| Rotating Mast support for Wind Calculation | • | • | • |
| Port & Starboard Rudder inputs, with Toe-In | | | • |
| Advanced Linear channel types | | Set A | Set A+B |
| Dual Depth sensors | • | • | • |
| Network Loadcells | • | • | • |



Analogue Displays

B&G's Analogue displays provide a clear view of key data types in a classic display, meeting the aesthetic demands of classic yachts and providing instant understanding of important data, like Wind Angle, at a glance.

Analogue Displays – all models

See www.bandg.com

H5000 Sensors



Heading Sensors

The Precision-9 Compass supplies heading and rate-of-turn information to B&G instrument, autopilot, radar and navigation systems. Incorporating a nine-axis array of solid-state motion and orientation sensors, the Precision-9 also provides accurate heel, trim and heave data to compatible equipment via its NMEA 2000® interface.

| | |
|---------------------|---------------|
| Precision 9 Compass | 000-12607-001 |
|---------------------|---------------|



Expansion Modules

H5000 Expansion modules provide additional interfacing capacity. Serial Expansion for interfacing additional GPS units, Gyro compasses and other NMEA 0183 devices. Analogue Expansion enables additional inputs for 0-5V sensors including wind, mast angle and loadcells.

| | |
|--------------------------|---------------|
| H5000 Serial Expansion | 000-11726-001 |
| H5000 Analogue Expansion | 000-11725-001 |



Wind Sensors

High performance light-weight wind speed and angle sensors, built to withstand the rigors of offshore racing and high-latitude cruising. B&G's wind sensors are accurate and stable across all wind conditions – providing confidence in the data, whether for a tactical windshift call or autopilot steering performance.

| | |
|---------------------------------|-----------|
| Vertical Wind Sensor Pack 810m | BGH030001 |
| Vertical Wind Sensor Pack 1050m | BGH030002 |
| Vertical Wind Sensor Pack 1450m | BGH030003 |

Further wind sensor models are available, see www.bandg.com



Speed Sensors

Accurate boat speed is key to any instrument system, ensuring calculated functions including True Wind are as precise as possible. Options include dedicated speed sensors, for optimum performance, and combined Depth/Speed sensors for single through-hull convenience.

| | |
|---|-------------|
| H5000 Speed Sensor, Plastic housing | SEN-SPD-HP |
| H5000 Speed Sensor, Plastic Flush housing | SEN-SPD-HPF |
| H5000 Speed Sensor Bronze housing | SEN-SPD-HM |
| DST800 NMEA 2000 Depth/Speed | 22098552 |



Depth Sensors

B&G offer a selection of sensors to provide the all-important depth data. Select a DT800 sensor to partner a dedicated speed sensor, or select the combined DST800 depth/speed sensor. Both options are NMEA 2000 compatible and include water temperature sensors.

| | |
|------------------------------|---------------|
| DT800 NMEA 2000 Depth | 000-11738-001 |
| DST800 NMEA 2000 Depth/Speed | 22098552 |



Rudder Sensors

Rudder angle is imperative for both autopilot performance and race yacht performance optimization. B&G's sensors provide highly accurate rudder data ten times per second.

| | |
|---------------------|---------------|
| RF25N Rudder sensor | 000-10756-001 |
| RF300 Rudder sensor | 20193744 |

H5000 Pilot

Advanced Sailing Features

The H5000 Pilot isn't the same as other autopilots, its expert systems constantly monitor heading, wind, sea-state, heel angle and other variables to react to changes in conditions immediately, providing performance and safety in equal measure.

Recovery Mode recognises sudden course deviations caused by out of pattern waves and ensures that the yacht deviates less from the target course and returns to course quicker.

Gust Response takes pre-emptive action based on incoming H5000 or WTP3 instrument data to hold a more stable course in changeable wind conditions.

High-Wind Response naturally bears the yacht away if wind increases while reaching to keep the boat flatter and driving faster.

B&G's H5000 Pilot contains failsafe systems including secondary data sources and user configurable hard-limits to provide safety features to match its performance.



Pilot Keypad

Provides straightforward autopilot control and system setup from its dedicated keypad. As the primary Pilot Controller, or as a second station to a Zeus chartplotter, the Pilot Controller provides assured control and feedback.

H5000 Pilot Keypad Features

- Dedicated pilot control
- Full pilot setup access
- Glass bonded, monochrome display
- Straightforward interface

H5000 Pilot Keypad

000-11544-001



Pilot CPU

The record-breaking and Vendee Globe winning H5000 Pilot features dedicated sailing algorithms and steering modes - Gust Response, Recovery and High-Wind Response. It has been proven in the toughest of conditions and the most testing environments and is ideal for short-handed racing.

H5000 Pilot CPU Features

- Steer to compass, wind or waypoint
- Apparent and true wind steering
- Expert Systems including gust and high-wind response
- Auto response switching and recovery mode

H5000 Pilot CPU

000-11554-001



Wireless Remote

Wirelessly control your autopilot from anywhere on-board with this Bluetooth® Wireless Pilot Controller. Worn on the wrist or a lanyard, the WR10 works with H5000 and Triton² Pilot systems, up to 30m from the waterproof base station.

WR10 Remote Controller & BT-1 Base Station

000-12316-001

WR10 Remote Controller - additional remote

000-12358-001



WTP3

WTP3 is the ultimate Grand Prix instrument system.

The powerful multi-processor CPU links to distributed data acquisition modules via 3 independent CAN networks, providing vast data collection and calculation possibilities. The data is processed in the CPU that transmits serial data for output via modules, communicates with PC software via Ethernet and operates an on-board datalogger for post-sail data analysis.

WTP3 systems are installed by certified professionals and fully supported throughout commissioning and use.

The WTP3 meets three principle objectives

- Flexibility and reliability for the professional yacht navigator
- Un-matched data accuracy with powerful calibration options and 3D Motion correction
- Super-fast data calculation and display

Contact your B&G Grand Prix specialist for more information.

WTP3 CPU System Pack



WTP3 provides data acquisition while eliminating the effects of boat motion for accuracy and flexibility.

WTP3 CPU

000-10313-001

WTP3 Serial Module



Provides serial data acquisition, and includes a range of input and output options to support a wide variety of sensors.

WTP3 Serial Module

000-10308-001

WTP3 Analogue Module



Delivers high-precision analogue data acquisition, and includes a range of input and output options to support a wide variety of sensors.

WTP3 Analogue Module

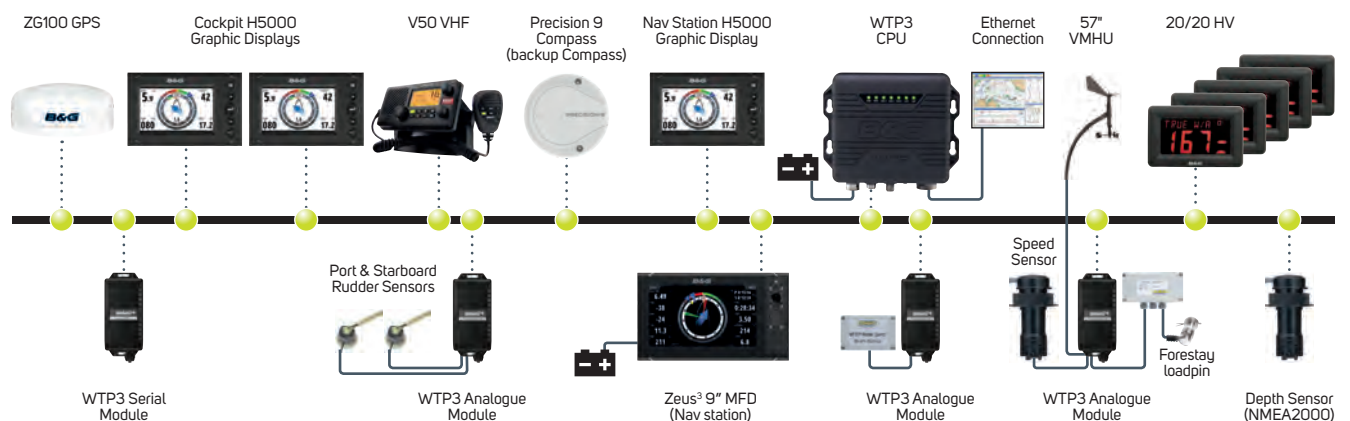
000-10316-001



The ultimate Grand Prix electronics system

WTP3 is at the heart of leading Grand Prix racing yachts – including every Volvo Ocean Race yacht and the winner of the Vendee Globe.

Accurate, repeatable data enables the navigator and crew to make race winning decisions with confidence.



Communications



V20S VHF

The V20S is perfect as a stand-alone VHF system in the cockpit or at the navigation station. The sleek low profile design, clear bright display, and easy button access are combined with key features including all international channels, Class D DSC Approved and NMEA 2000® compatible.

V20S VHF Radio

000-14492-001



V60 VHF

Stay safe and connected with this VHF marine radio featuring a sleek design with removable fist mic, Class D DSC functionality and built-in AIS. Keep track of nearby AIS-equipped vessels with the integrated AIS receiver, and add up to two optional H60 wireless handsets to communicate clearly from anywhere on board.

V60 VHF Radio

000-14471-001



V90S VHF

Stay connected with B&G's powerful V90S VHF radio. Supporting up to 6 handsets, it's packed with innovative features for inter- and intra-vessel communication, easy to read and built tough, with integral AIS receiver, foghorn, intercom and NMEA connectivity for sharing data on your chartplotter.

V90S VHF System

000-14532-001



H60 Handset

The H60 remote handset adds wireless communications to the V60 VHF, duplicating the display and key controls to the handset and providing an on-board intercom system, for flexible communications away from the chart table.

H60 Wireless Handset

000-14476-001



H50 Handset

The H50 is an optional wireless handset for the V90 VHF. H50 combines impressive range with inductive charging for flexible communications at and away from the chart table.

H50 Wireless Handset

000-11237-001



Our Support

B&G is there when you need it the most.



Regatta Support

B&G experts are present at hundreds of events every year to support you. Check our website and subscribe to our newsletters to keep up to date with our regatta schedule.

B&G Service

We are committed to offer you the best service. For this reason, in addition to our comprehensive warranty, our dedicated support teams offer B&G customers preferential out-of-warranty terms for up to five years after purchase. Extended warranties are also available for absolute peace-of-mind.



Contact consumer support directly from your chartplotter. The NASA integrated diagnostics tool is now available in all B&G multifunction displays.

Store

The Store is a one-stop shop for marine-mapping needs that gives boaters the capability to download purchases or C-MAP Genesis® custom maps to a personal computer or directly to Vulcan and Zeus³ displays, for immediate use.

Visit www.gofreeshop.com to learn more.

Link


The Link app gives you remote control of wirelessly connected B&G multifunction displays from your smartphone or tablet. Link lets you select any wirelessly connected display on board, duplicates the screen in real-time on your mobile device, and synchronise waypoints, routes and tracks.





B&G

www.bandg.com

 facebook.com/bandgsailing

 [@bandg_sailing](https://twitter.com/bandg_sailing)

 youtube.com/bandgsailing

 [@bandgsailing](https://instagram.com/bandgsailing)